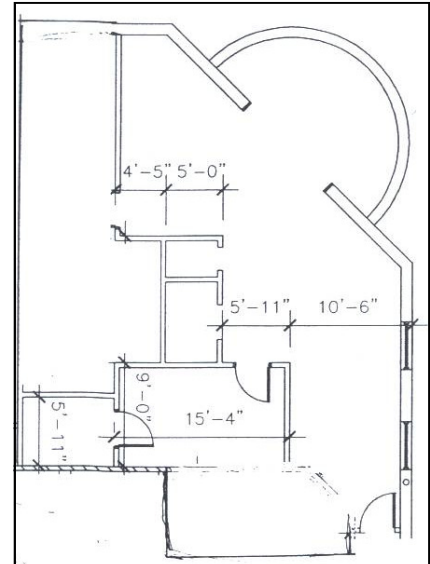


Dillons announces major expansion at Fairlawn Plaza

PROPERTY: 5331 SW 22ND STREET, TOPEKA, KS



PROPERTY: FAIRLAWN PLAZA SHOPPING CENTER

LOCATION: 5331 SW 22nd St., Topeka, KS

SIZE: 1,713 Square Feet

PARKING: To Code

REMARKS: Great Location -- Corner of 21st & Fairlawn -- 40,000 cars per day

Anchor Tenants: Dillons, Walgreens, office Max and Hastings

LEASE RATE: Base Rent - \$7.84 per square foot plus Net charges - \$3.25 per square foot per year
(Estimated 2009)

Contact:

Stephen Sofro

Associated Commercial Brokers Co.

1111 SW Gage Blvd., Suite 100

Topeka, KS 66604

(785) 228-9494

Email: sofro@acbcomp.com

Website: www.acbcomp.com

All information furnished regarding property for sale or lease is from sources deemed reliable; but no warranty or representation is made as to the accuracy thereof and the same is submitted subject to errors, omissions, changes of price, rental or other conditions prior to sale or lease, or withdrawal without notice.