

PROPERTY: 1930 SW Westport Dr., Topeka, KS



SITE AREA:

45,302 Square Feet

BUILT IN 2003

IMPROVEMENTS:

**12,231 Square Foot
Retail Strip**

ZONING:

Commercial

100% OCCUPANCY

LISTED PRICE:

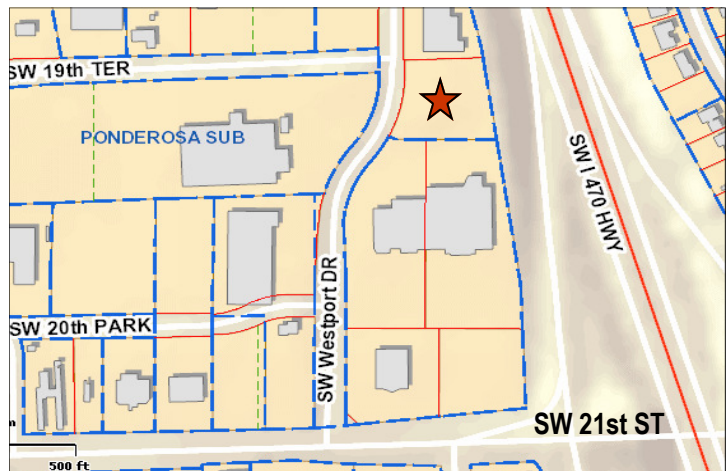
\$1,450,000

**LOCATION: Two (2) blocks east of
Wanamaker Rd.**

Excellent Visibility from I-470

TENANTS:

**O'Dooley's Irish Pub & Grille
Altered Image
Champion Window Company**



Contact:

Dick Laird

Associated Commercial Brokers Co.

1111 SW Gage Blvd., Suite 100

Topeka, KS 66604

(785) 228-9494

Email: laird@acbcomp.com

Website: www.acbcomp.com