



# OFFICE PARK BUILDING SITE

## GOOD I-470 VISIBILITY

---

**Location:** South of 21st on Belle, Topeka, KS

**Space Size:** 4.58 Acres—(4) Separately Plated Lots  
Plat on Reverse Side

**Zoning:** PUD

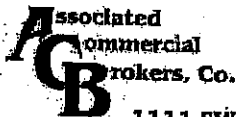
**Area Description:** The property runs North to South on Belle

**Remarks:** 1 Block South of 21st Street  
2 Blocks West of Fairlawn  
Will do a design build for sale or lease

**Sale Price:** Lots - \$5.00 per square foot

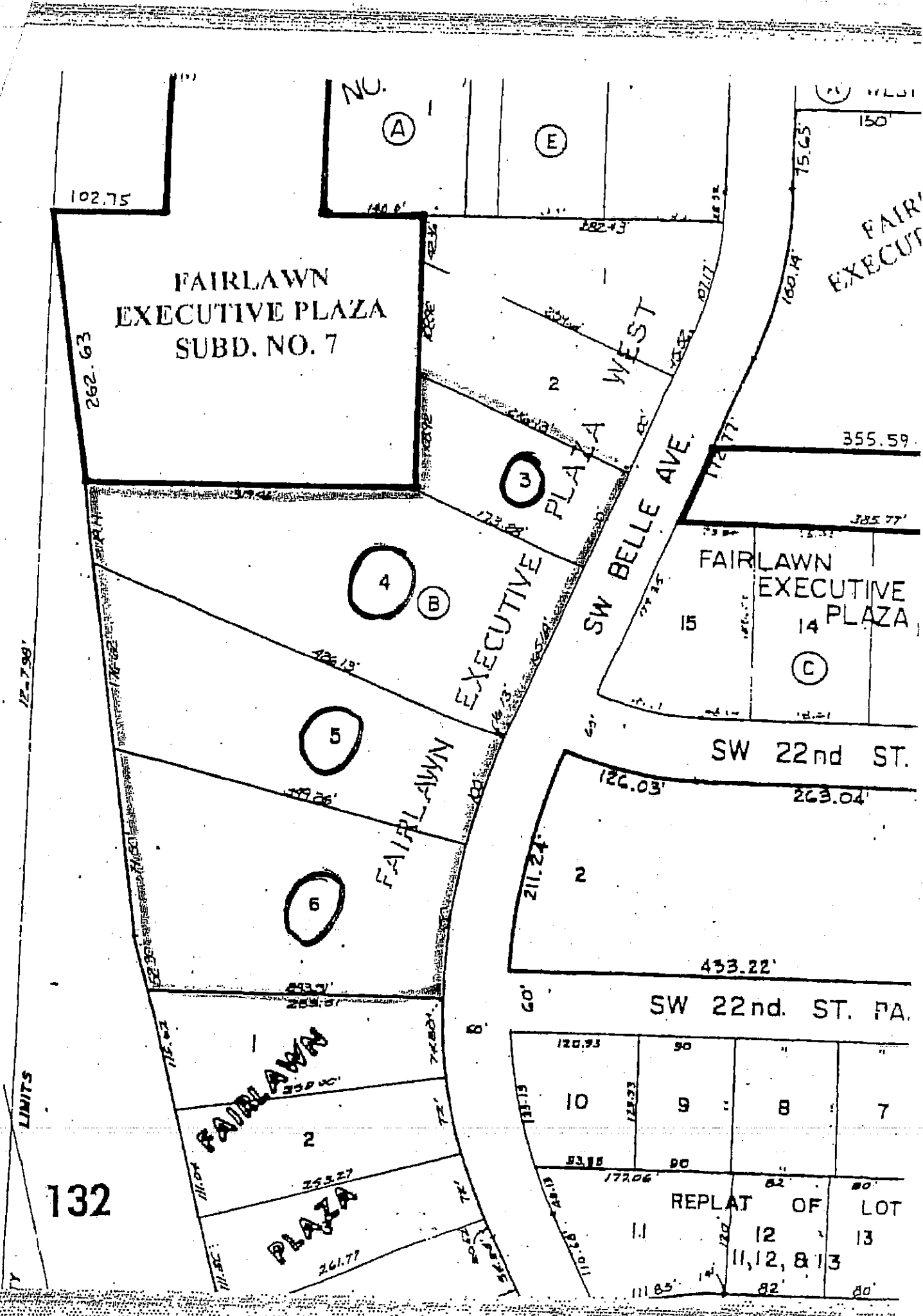
---

All information furnished regarding property for sale or lease is from sources deemed reliable; but no warranty or representation is made as to the accuracy thereof and the same is submitted subject to errors, omissions, changes of price, retail or other conditions prior sale or lease, or withdrawal without notice.



1111 SW Gage Blvd., Suite 100  
Topeka, KS 66604  
(785) 228-9494 - Phone  
(785) 228-9696 - Fax

**CONTACT:**  
**Stephen B. Sofro**  
785-228-9494  
[sofro@acbcomp.com](mailto:sofro@acbcomp.com)



102.75

FAIRLAWN  
EXECUTIVE PLAZA  
SUBD. NO. 7

262.63

NO.

(A)

(E)

(F) WEST  
150'

75.65

FAIRLAWN  
EXECUTIVE PLAZA

PLAYA WEST

2

(3)

355.59

385.77'

FAIRLAWN  
EXECUTIVE  
PLAZA

15

14

(C)

SW 22nd ST.

126.03'

40.622'

(5)

FAIRLAWN

EXECUTIVE PLAZA

211.24'

2

453.22'

SW 22nd. ST. PA.

120.93	90	"	"
10	9	8	7
53.15	90	"	"

REPLAT OF LOT

11 12 13  
11, 12, & 13

12-7-99'

LIMITS

132

FAIRLAWN

PLAZA

2

253.27

261.77

60'

120.93

53.15

177.06

82

80

80

80

111.85'

82'

80'