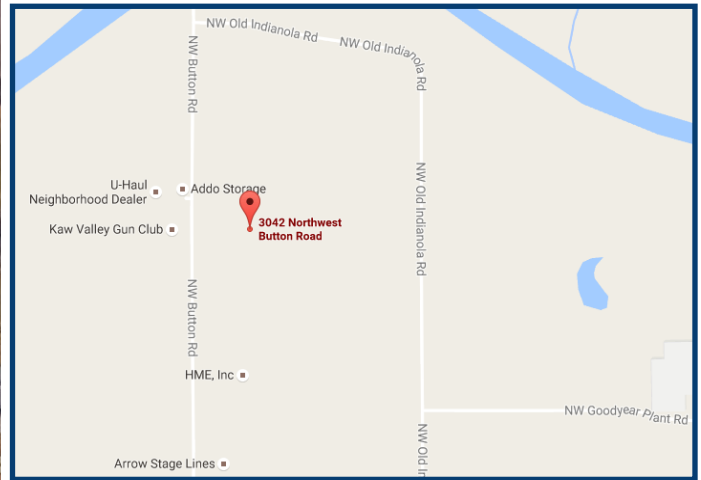
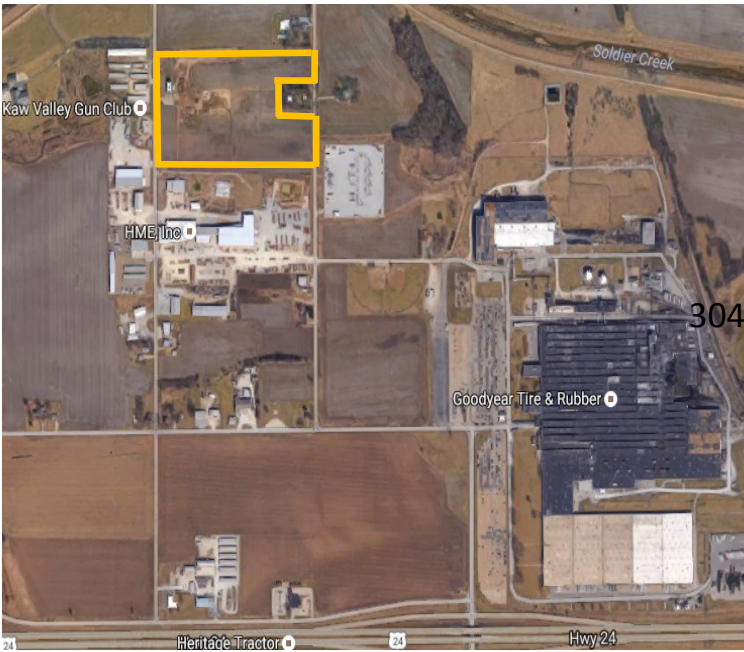


**3042 NW Button Rd., Topeka, KS**

\*\*\*\*\*

**26 Acres M/L**



**ACREAGE:** Button Rd. Frontage - 12.5 Acres  
 Old Indianola Rd. Frontage - 13.5 Acres

**ZONING:** I-2 Heavy Industrial

**JURISDICTION:** Shawnee County

**PRICE:** Button Rd. - \$18,000.00 per acre  
 Old Indianola Rd. - \$15,000.00 per acre

Contact:

**DICK LAIRD, Associate Broker**  
 ASSOCIATED COMMERCIAL BROKERS CO.  
 1111 SW Gage Blvd., Suite 100  
 Topeka, KS 66604  
 (785) 228-9494  
 Email: laird@acbcomp.com  
 Web site: www.acbcomp.com

All information furnished regarding property for sale or lease is from sources deemed reliable; but no warranty or representation is made as to the accuracy thereof and the same is submitted subject to errors, omissions, changes of price, rental or other conditions prior to sale or lease, or withdrawal without notice. The purchaser and or lesser should conduct a careful, independent investigation of the property to determine if the property is suitable for your intended use.